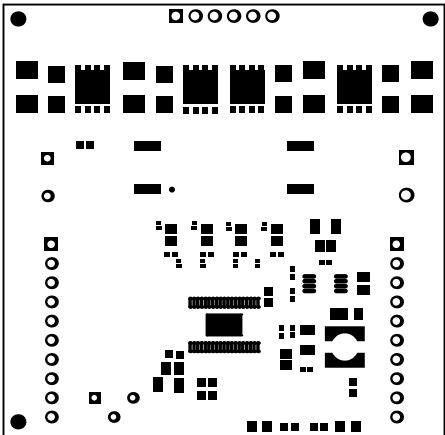
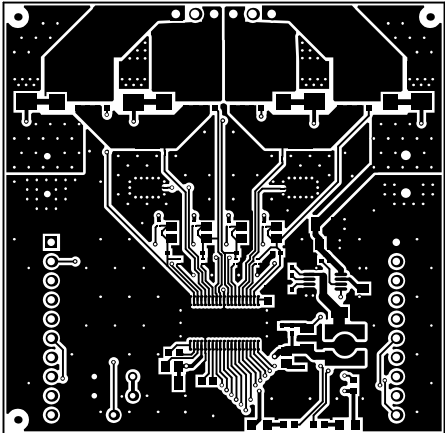


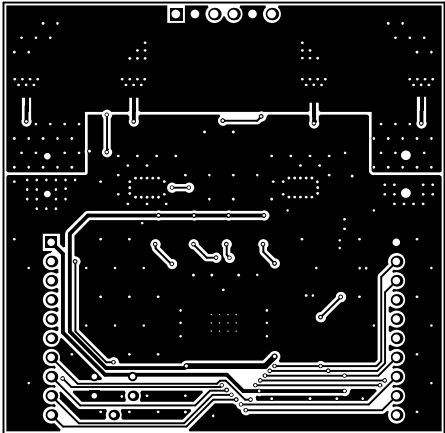
ALL ARTWORK VIEWED FROM TOP SIDE	BOARD #: TIDA-00872	REV: E1	SUN REV: Not In VersionControl
LAYER NAME = Top Overlay			
PLOT NAME = Top Overlay	GENERATED : 11/23/2015 10:08:22 AM	TEXAS INSTRUMENTS	



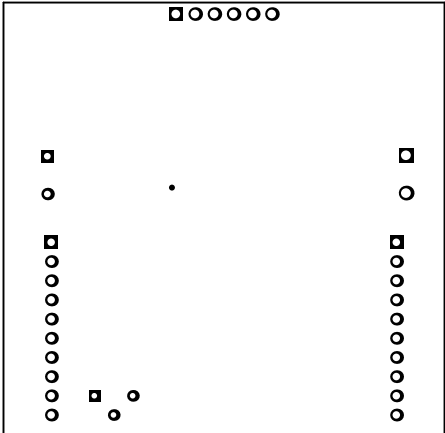
ALL ARTWORK VIEWED FROM TOP SIDE	BOARD #: TIDA-00872	REV: E1	SUN REV: Not In VersionControl
LAYER NAME = Top Solder			
PLOT NAME = Top Solder Mask	GENERATED : 11/23/2015 10:08:24 AM	TEXAS INSTRUMENTS	



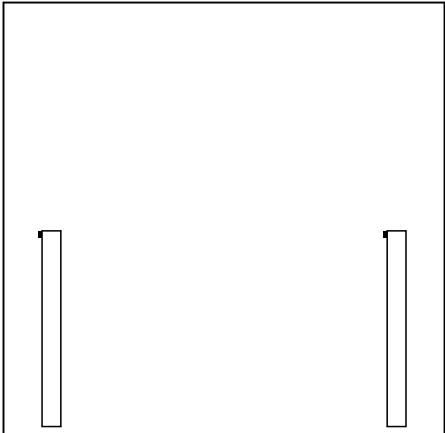
ALL ARTWORK VIEWED FROM TOP SIDE	BOARD #: TIDA-00872	REV: E1	SUN REV: Not In VersionControl
LAYER NAME = Top Layer			
PLOT NAME = Top Layer	GENERATED : 11/23/2015 10:08:25 AM	TEXAS INSTRUMENTS	



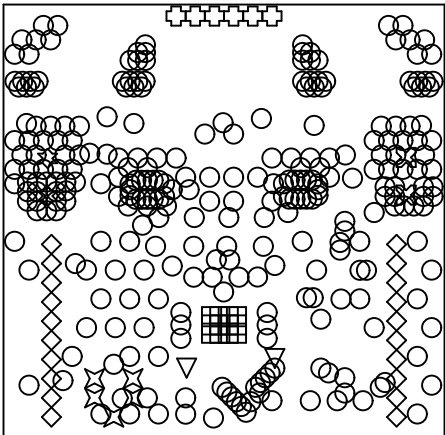
ALL ARTWORK VIEWED FROM TOP SIDE	BOARD #: TIDA-00872	REV: E1	SUN REV: Not In VersionControl
LAYER NAME = Bottom Layer			
PLOT NAME = Bottom Layer	GENERATED : 11/23/2015 10:08:26 AM	TEXAS INSTRUMENTS	



ALL ARTWORK VIEWED FROM TOP SIDE	BOARD #: TIDA-00872	REV: E1	SUN REV: Not In VersionControl
LAYER NAME = Bottom Solder			
PLOT NAME = Bottom Solder Mask	GENERATED : 11/23/2015 10:08:27 AM		TEXAS INSTRUMENTS

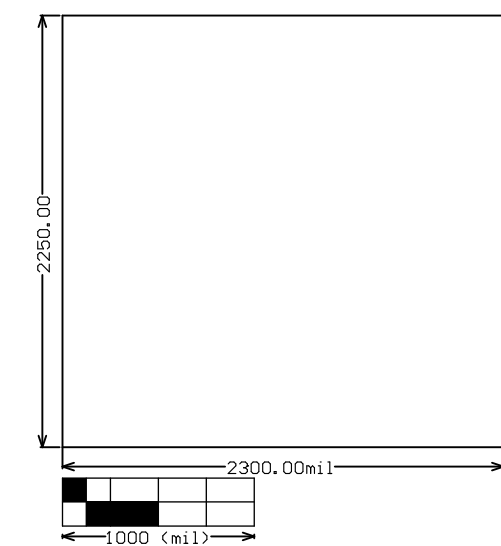


ALL ARTWORK VIEWED FROM TOP SIDE	BOARD #: TIDA-00872	REV: E1	SUN REV: Not In VersionControl
LAYER NAME = Bottom Overlay			
PLOT NAME = Bottom Overlay	GENERATED : 11/23/2015 10:08:28 AM		TEXAS INSTRUMENTS



Symbol	Quantity	Finished Hole Size	Plated	Hole Type
□	12	7.87mil (0.200mm)	PTH	Round
○	289	15.00mil (0.381mm)	PTH	Round
▽	2	18.00mil (0.457mm)	PTH	Round
✕	5	31.00mil (0.787mm)	PTH	Round
☆	2	35.43mil (0.900mm)	PTH	Round
◇	20	40.16mil (1.020mm)	PTH	Round
⊗	6	45.28mil (1.150mm)	PTH	Round
⊗	2	51.18mil (1.300mm)	PTH	Round
338 Total				

ALL ARTWORK VIEWED FROM TOP SIDE	BOARD #: TIDA-00872	REV: E1	SUN REV: Not In VersionControl
LAYER NAME = Drill Drawing			
PLOT NAME = Drill Drawing	GENERATED : 11/23/2015 10:08:29 AM		TEXAS INSTRUMENTS



ALL ARTWORK VIEWED FROM TOP SIDE	BOARD #: TIDA-00872	REV: E1	SUN REV: Not In VersionControl
LAYER NAME = M2 Board Dimensions			
PLOT NAME = Board Dimensions	GENERATED : 11/23/2015 10:08:30 AM		TEXAS INSTRUMENTS